

SkyScape[®] Architectural Canopies are available in a variety of profiles and styles. Our post-supported arched canopies provide an attractive building entry and allow for greater projection from the building to offer weather protection for customers and employees. The design eliminates the need for hanger supports and allows flexibility with multiple wall and building conditions, along with a variety of post and column style options. SkyScape canopies are fabricated using extruded aluminum components for unbeatable strength and durability. Capable of withstanding even the harshest weather conditions, they can last years without rusting or corroding. And because our manufactured canopies are welded, not thru-fastened, field installation is simplified to ensure a top-quality product with a fast completion time.



POST-SUPPORTED ARCHED CANOPIES



FEATURES

- Engineered
- Curved Fascia
- Deck Options
- Strength & Durability
- Drainage Options
- Finish Options

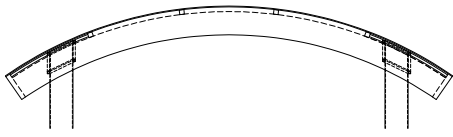
TYPE OF BUILDINGS & APPLICATIONS

- Retail Buildings
- Education
- Shopping Centers
- Storefronts
- Office Buildings
- Parking Garages
- Renovation Projects

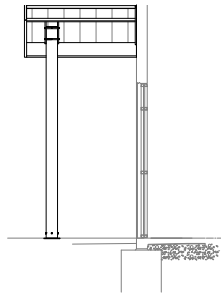
POST-SUPPORTED ARCHED CANOPIES



SECTION DETAIL

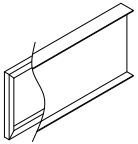


Front



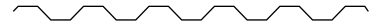
End

FASCIA OPTIONS



Frame &
Formed Metal
8", 10", 12" & 16"

DECKING OPTIONS



Corrugated



1" x 12"
Standing Seam

